



THE CORRINGHAM AN IMPRESSIVE THREE BEDROOM HOME

This well appointed three bedroom detached home has impressive dual frontage, good family accommodation and a detached garage.

The Corringham has a most welcoming entrance hall that opens to the right into a spacious, light and airy living room with dual aspect windows. Left off the hall, the eat-in kitchen comes fully fitted with premium, integrated appliances including a fridge/freezer, stainless steel gas hob, multi-function oven and cooker hood. From the large kitchen/dining area, French doors open onto the garden for alfresco dining and a handy utility room provides space for washing machine, tumble dryer and storage. There is also a downstairs cloakroom.

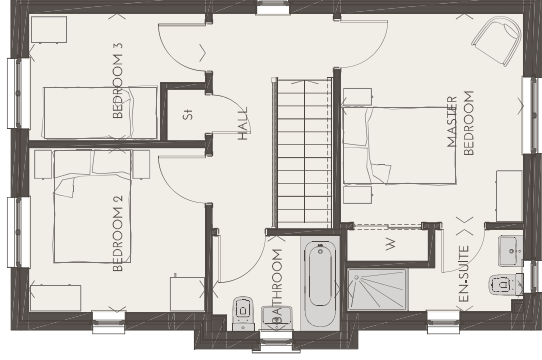
Upstairs, the spacious master bedroom has a built-in wardrobe and an en-suite shower room with 1100mm shower and feature mirror. Another good-sized double bedroom and a single bedroom are also on this floor, and the family bathroom has stylish and contemporary free-standing sanitary ware. There is additional storage upstairs too.

KEY FEATURES

- Three bedroom detached home
- Spacious living room with dual aspect windows
- Contemporary open-plan kitchen/dining room
- Integrated premium appliances
- French doors to garden
- Utility room and cloakroom on ground floor
- En-suite shower room to master bedroom
- Built-in wardrobe to master bedroom
- Garage with light and power
- Excellent storage

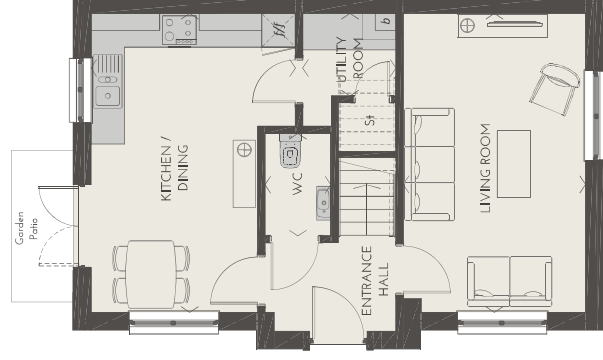
Please note: the position of the detached double garage varies per plot; please see architectural site layout plan for details.

External finishes may vary from shown. Some of our homes are built as a mirror-image (handed) of those shown here. Please do ask your sales consultant for full details.



Legend:
W - built-in wardrobe
St - store

FIRST FLOOR	
Master Bedroom	3.727m x 3.257m 12' 3" x 10' 8"
En-suite	1.477m x 3.145m 4' 10" x 10' 4"
Bedroom 2	2.933m x 3.145m 9' 7" x 10' 4"
Bedroom 3	2.269m x 3.145m 7' 5" x 10' 4"
Bathroom	1.702m x 2.282m 5' 7" x 7' 6"



Legend:
f/f - tall integrated fridge freezer
b - boiler
St - store

GROUND FLOOR

Living Room	5.322m x 3.247m 17' 6" x 10' 8"
Kitchen/Dining	5.322m x 3.643m 17' 6" x 11' 11"
Utility	1.517m x 1.660m 5' 0" x 5' 5"
WC	1.724m x 1.172m 5' 8" x 3' 10"

FLOOR AREA 95.32m² (1026ft²)

Floor area does not include any garages.