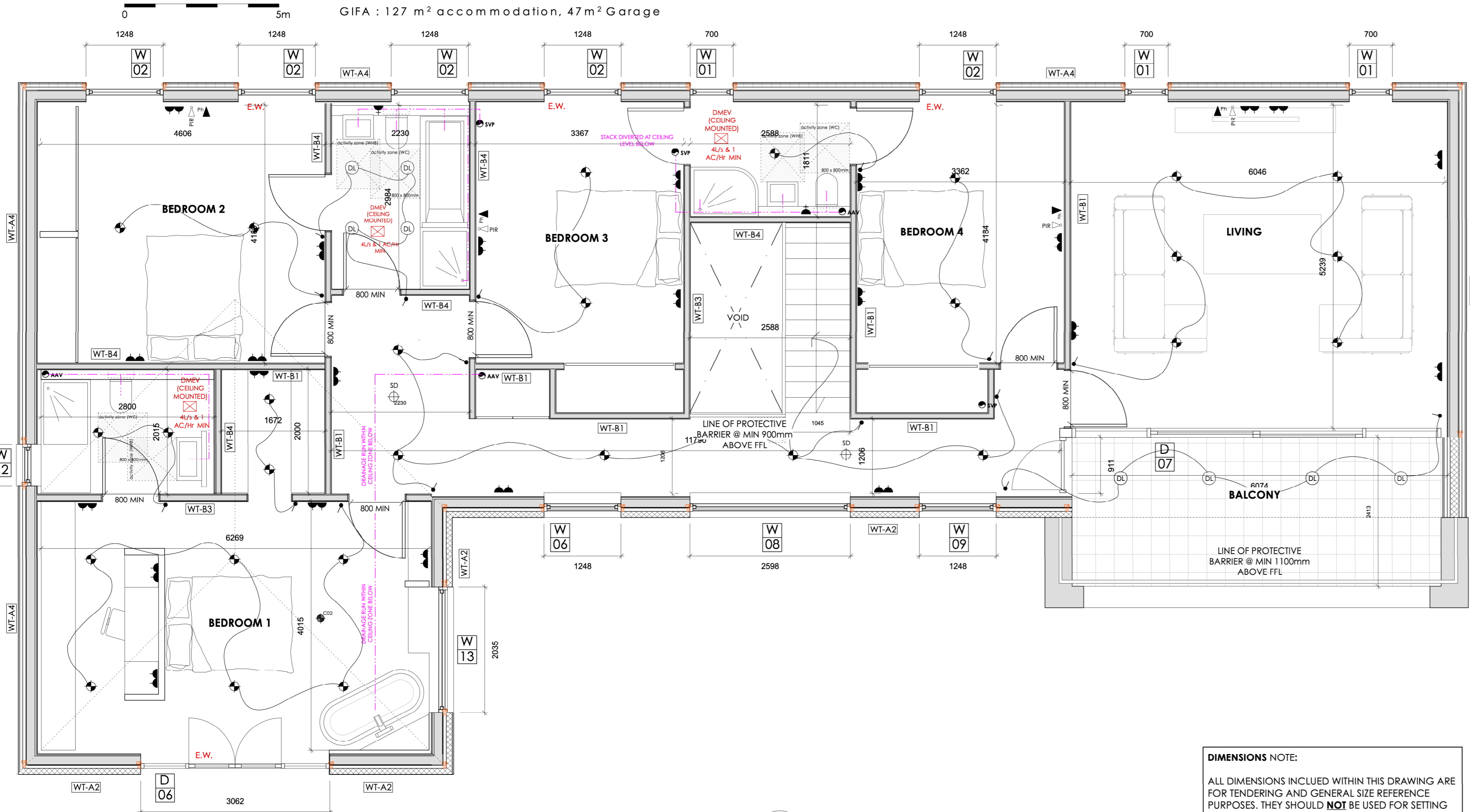
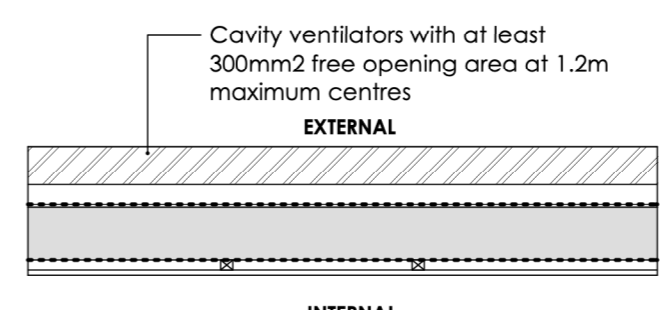


Proposed Ground floor plan - @ 1:50



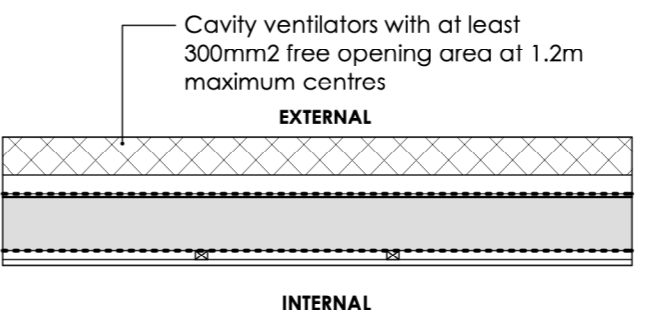
Proposed 1st Floor plan - @ 1:100

WALL TYPES SCHEDULE



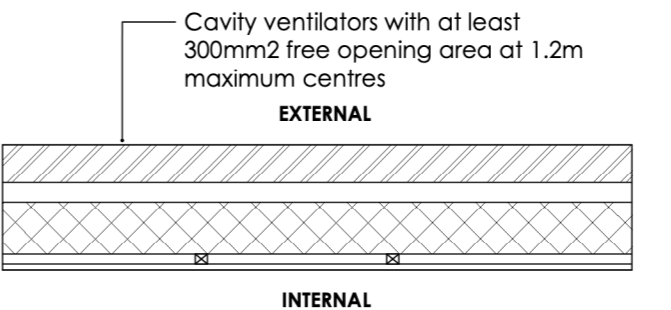
WALL TYPE A1
EXTERNAL FACING BRICK TIMBER KIT CAVITY WALL
 To achieve 30 MIN Fire Resistance Duration
 To achieve maximum U-Value of 0.18W/m2K

- 102.5mm Facing brick
- 50mm Ventilated cavity
- Reflective breather membrane
- 9mm Sheathing OSB
- 140mm T.K Panel with full fill mineral wool insulation (10-60kg/m2)
- VCL
- 25 x 25mm SW treated timber battens forming service cavity
- 1 no. sheet 15mm moisture resistant plasterboard (8kg/m2) with Plywood



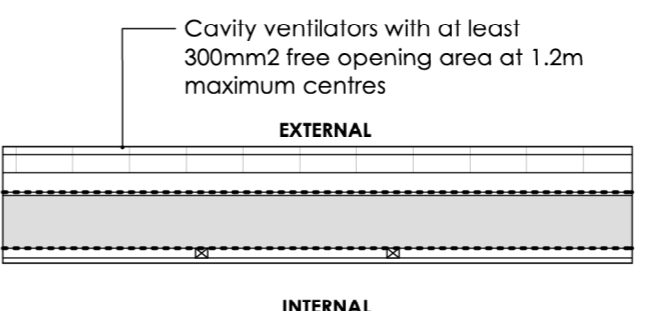
WALL TYPE A2
EXTERNAL RENDERED TIMBER KIT CAVITY WALL
 To achieve 30 MIN Fire Resistance Duration
 To achieve maximum U-Value of 0.18W/m2K

- 18mm Proprietary Render
- 100mm Dense concrete block
- 50mm Ventilated cavity
- Reflective breather membrane
- 9mm Sheathing OSB
- 140mm T.K Panel with full fill mineral wool insulation (10-60kg/m2)
- VCL
- 25 x 25mm SW treated timber battens forming service cavity
- 1 no. sheet 15mm moisture resistant plasterboard (8kg/m2) with Plywood



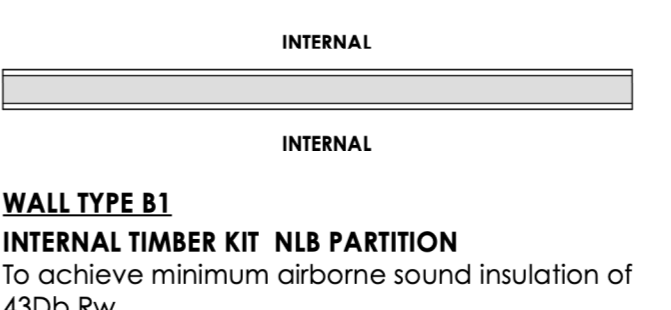
WALL TYPE A3
EXTERNAL FACING BRICK MASONRY CAVITY WALL
 To achieve 30 MIN Fire Resistance Duration

- 102.5mm Facing brick
- 50mm Ventilated cavity
- 140mm Dense concrete blockwork to Structural Engineer's specification
- 25 x 25mm SW treated timber battens forming service cavity
- 1 no. sheet 15mm moisture resistant plasterboard (8kg/m2) with skim coat finish



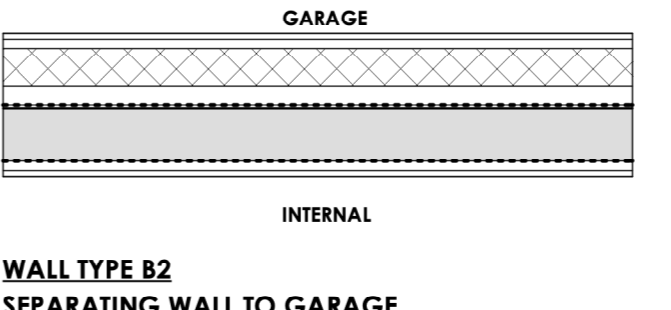
WALL TYPE A4
EXTERNAL CLADDING TIMBER KIT CAVITY WALL
 To achieve 30 MIN Fire Resistance Duration
 To achieve maximum U-Value of 0.18W/m2K

- Proprietary horizontal fibre cement cladding board
- 50 x 50mm SW treated timber battens on 50 x 50mm SW treated timber counter battens
- Reflective breather membrane
- 9mm Sheathing OSB
- 140mm T.K Panel with full fill mineral wool insulation (10-60kg/m2)
- VCL
- 25 x 25mm SW treated timber battens forming service cavity
- 1 no. sheet 15mm moisture resistant plasterboard (8kg/m2) with Plywood



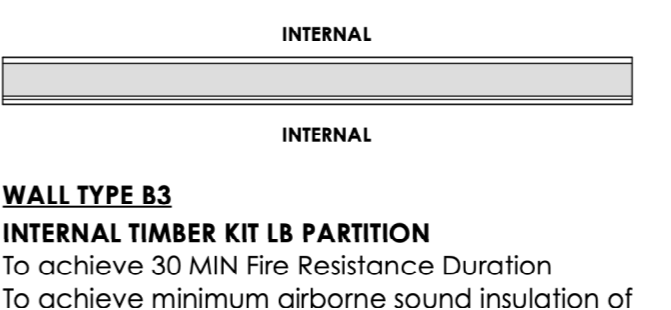
WALL TYPE B1
INTERNAL TIMBER KIT NLB PARTITION
 To achieve minimum airborne sound insulation of 43Db Rw

- 15mm Plasterboard (8kg/m2) (Moisture resistant to Bathroom)
- 75mm SW timber framing with 25mm mineral wool insulation (10kg/m3)
- 15mm Plasterboard (8kg/m2) (Moisture resistant to Bathroom)



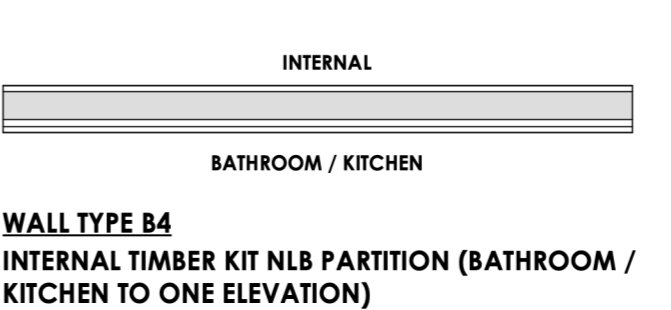
WALL TYPE B2
SEPARATING WALL TO GARAGE
 To achieve 30 MIN Fire Resistance Duration
 To achieve maximum U-Value of 0.18W/m2K

- 15mm Plasterboard (8kg/m2)
- 100mm Dense concrete block
- 50mm Ventilated cavity
- Reflective breather membrane
- 9mm Sheathing OSB
- 140mm T.K Panel with full fill mineral wool insulation (10-60kg/m2)
- VCL
- 25 x 25mm SW treated timber battens forming service cavity
- 1 no. sheet 15mm moisture resistant plasterboard (8kg/m2) with Plywood



WALL TYPE B3
INTERNAL TIMBER KIT LB PARTITION
 To achieve 30 MIN Fire Resistance Duration
 To achieve minimum airborne sound insulation of 43Db Rw

- 15mm Plasterboard (8kg/m2) (Moisture resistant to Bathroom)
- 89mm SW timber framing with 25mm mineral wool insulation (10kg/m3)
- 9mm OSB board (If required by TK Manufacturer)
- 15mm Plasterboard (8kg/m2) (Moisture resistant to Bathroom)



WALL TYPE B4
INTERNAL TIMBER KIT NLB PARTITION (BATHROOM / KITCHEN TO ONE ELEVATION)
 To achieve minimum airborne sound insulation of 43Db Rw

- 15mm Plasterboard (8kg/m2) (Moisture resistant to Bathroom)
- 89mm SW timber framing with 25mm mineral wool insulation (10kg/m3)
- 18mm Plywood patress layer between studs
- 15mm Plasterboard (8kg/m2) (Moisture resistant to Bathroom)

GENERAL NOTES :
 1. ALL DRAWINGS TO BE READ IN CONJUNCTION WITH ALL ARCHITECTS & ENGINEERS DWG'S & LITERATURE.
 2. **DO NOT SCALE FROM THESE DRAWINGS**
 ALL DIMENSIONS IN MILLIMETERS UNLESS NOTED- IF IN DOUBT ASK.
 3. THIS DRAWING HAS BEEN PRODUCED FOR BUILDING WARRANT PURPOSES ONLY. SIGNIFICANT FURTHER DEVELOPMENT IS REQUIRED FOR ALL OTHER PURPOSES, INCLUDING CONSTRUCTION.

- KEY :**
- Line of separation to garage
 - New drainage branch to sanitary appliances
 - Wall Type Identifier
 - Window / Door Type Identifier
 - Intumescent cavity barrier
 - Twin 13 amp s/s
 - Twin light switch
 - Single light switch
 - Single 13 amp s/s
 - Pendant light fitting
 - LV flush mounted downlighter
 - Twin 13 amp s/s - Floor fixed
 - Mechanical ventilation - inlet
 - Wall mounted light fitting
 - Phone socket
 - Cable TV socket
 - Spur outlet, switched above worktop, marked appropriately
 - Movement/light sensor
 - Smoke Detector
 - Heat Detector
 - Carbon Monoxide Detector
 - Carbon Dioxide Detector (with monitor)

REVISIONS

Rev A	31.01.22	Dimensions added for pricing
Rev B	07.02.22	Additional dimensions added for pricing
Rev C	04.03.22	Wall types updated

WARRANT

Project	Project Number
AFION HOUSE PLOTS CANDIE FALKIRK	0920
Drawing	Drawn by
PROPOSED GROUND & FIRST FLOOR PLANS	Quoted @ A1 CM
Scale	Dwg Number
Quoted @ A1 CM	Revision
L-03	C

DIMENSIONS NOTE:
 ALL DIMENSIONS INCLUDED WITHIN THIS DRAWING ARE FOR TENDERING AND GENERAL SIZE REFERENCE PURPOSES. THEY SHOULD NOT BE USED FOR SETTING OUT OR FABRICATION PURPOSES